

LISTING SEQUENCE (Cont'd)

PHARMACY-COLLEGE CODE: P
PHARM 610 PHARMACY
PHARM 610 PHARMACY

PAGE

78

MEDICINE-SCHOOL CODE: Y
ANEST 906 ANESTHESIOLOGY
ANEST 906 ANESTHESIOLOGY

65

NEW

417 **The Epoch of Cervantes (3)**

An introductory study to Cervantes' environ...

Strindberg plays and of post-Strindberg plays
by dramatists from Lagerkvist to Forssell in

English translation. Student edition by

CHG

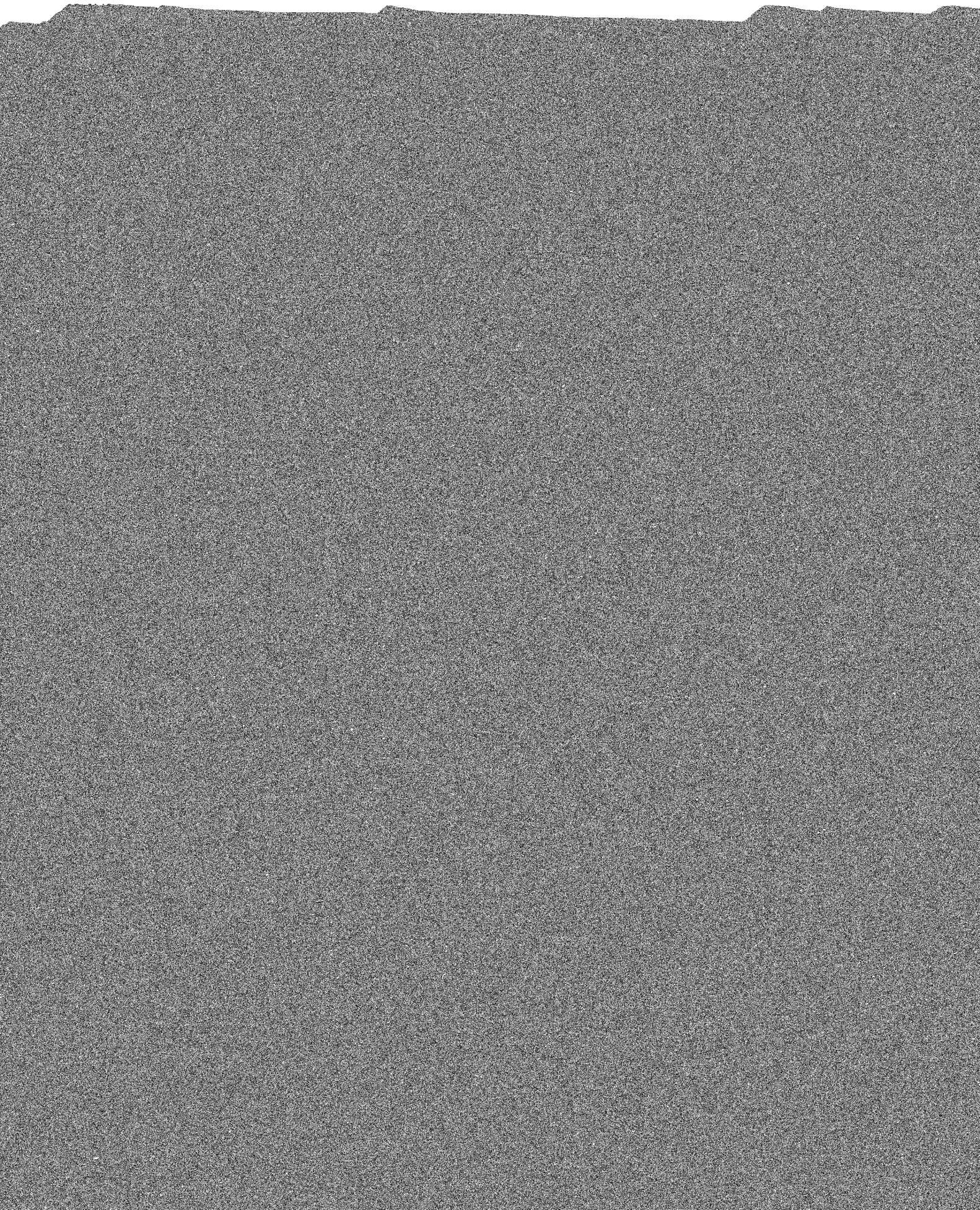
SPCH

250-254-255-256-257-258-259-260-261-262-263-264-265-266-267-268-269-270-271-272-273-274-275-276-277-278-279-280-281-282-283-284-285-286-287-288-289-290-291-292-293-294-295-296-297-298-299-300-301-302-303-304-305-306-307-308-309-310-311-312-313-314-315-316-317-318-319-320-321-322-323-324-325-326-327-328-329-330-331-332-333-334-335-336-337-338-339-340-341-342-343-344-345-346-347-348-349-350-351-352-353-354-355-356-357-358-359-360-361-362-363-364-365-366-367-368-369-370-371-372-373-374-375-376-377-378-379-380-381-382-383-384-385-386-387-388-389-390-391-392-393-394-395-396-397-398-399-400-401-402-403-404-405-406-407-408-409-410-411-412-413-414-415-416-417-418-419-420-421-422-423-424-425-426-427-428-429-430-431-432-433-434-435-436-437-438-439-440-441-442-443-444-445-446-447-448-449-450-451-452-453-454-455-456-457-458-459-460-461-462-463-464-465-466-467-468-469-470-471-472-473-474-475-476-477-478-479-480-481-482-483-484-485-486-487-488-489-490-491-492-493-494-495-496-497-498-499-500-501-502-503-504-505-506-507-508-509-510-511-512-513-514-515-516-517-518-519-520-521-522-523-524-525-526-527-528-529-530-531-532-533-534-535-536-537-538-539-540-541-542-543-544-545-546-547-548-549-550-551-552-553-554-555-556-557-558-559-560-561-562-563-564-565-566-567-568-569-570-571-572-573-574-575-576-577-578-579-580-581-582-583-584-585-586-587-588-589-590-591-592-593-594-595-596-597-598-599-600-601-602-603-604-605-606-607-608-609-610-611-612-613-614-615-616-617-618-619-620-621-622-623-624-625-626-627-628-629-630-631-632-633-634-635-636-637-638-639-640-641-642-643-644-645-646-647-648-649-650-651-652-653-654-655-656-657-658-659-660-661-662-663-664-665-666-667-668-669-670-671-672-673-674-675-676-677-678-679-680-681-682-683-684-685-686-687-688-689-690-691-692-693-694-695-696-697-698-699-700-701-702-703-704-705-706-707-708-709-710-711-712-713-714-715-716-717-718-719-720-721-722-723-724-725-726-727-728-729-730-731-732-733-734-735-736-737-738-739-740-741-742-743-744-745-746-747-748-749-750-751-752-753-754-755-756-757-758-759-760-761-762-763-764-765-766-767-768-769-770-771-772-773-774-775-776-777-778-779-780-781-782-783-784-785-786-787-788-789-790-791-792-793-794-795-796-797-798-799-800-801-802-803-804-805-806-807-808-809-810-811-812-813-814-815-816-817-818-819-820-821-822-823-824-825-826-827-828-829-830-831-832-833-834-835-836-837-838-839-840-841-842-843-844-845-846-847-848-849-850-851-852-853-854-855-856-857-858-859-860-861-862-863-864-865-866-867-868-869-870-871-872-873-874-875-876-877-878-879-880-881-882-883-884-885-886-887-888-889-890-891-892-893-894-895-896-897-898-899-900-901-902-903-904-905-906-907-908-909-910-911-912-913-914-915-916-917-918-919-920-921-922-923-924-925-926-927-928-929-930-931-932-933-934-935-936-937-938-939-940-941-942-943-944-945-946-947-948-949-950-951-952-953-954-955-956-957-958-959-960-961-962-963-964-965-966-967-968-969-970-971-972-973-974-975-976-977-978-979-980-981-982-983-984-985-986-987-988-989-990-991-992-993-994-995-996-997-998-999-1000

as a basis for therapeutic applications of drugs

NEW

ment. The concern is with the relationship of



ART - ART - CONTINUED

561	B	3/5	WITH 360 B
562	A	3/5	WITH 360 A
562	B	3/5	WITH 360 B

ASTRONOMY - ASTR - CONTINUED

AD QZ	T TH	1130-1230	GEB	222
AE QZ	T TH	1230-130	GEB	222
AF QZ	T TH	130-230	GEB	222

208 A 2 T TH 930-1030 DEN 307 403 A 5 D 1130-1230 SAV 333
NO AUDITORS HFFR

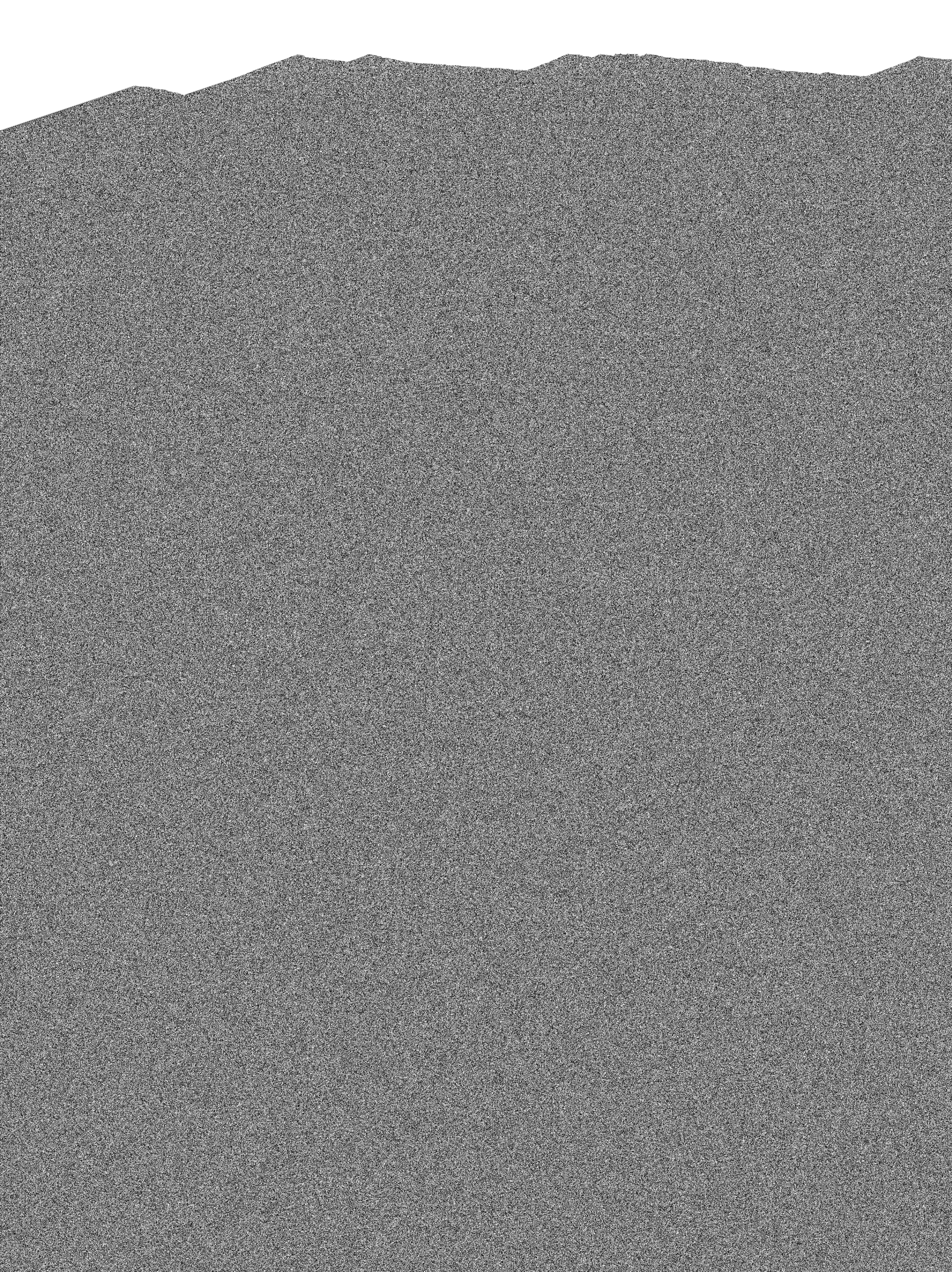
103 AA 3 M W F 630-930

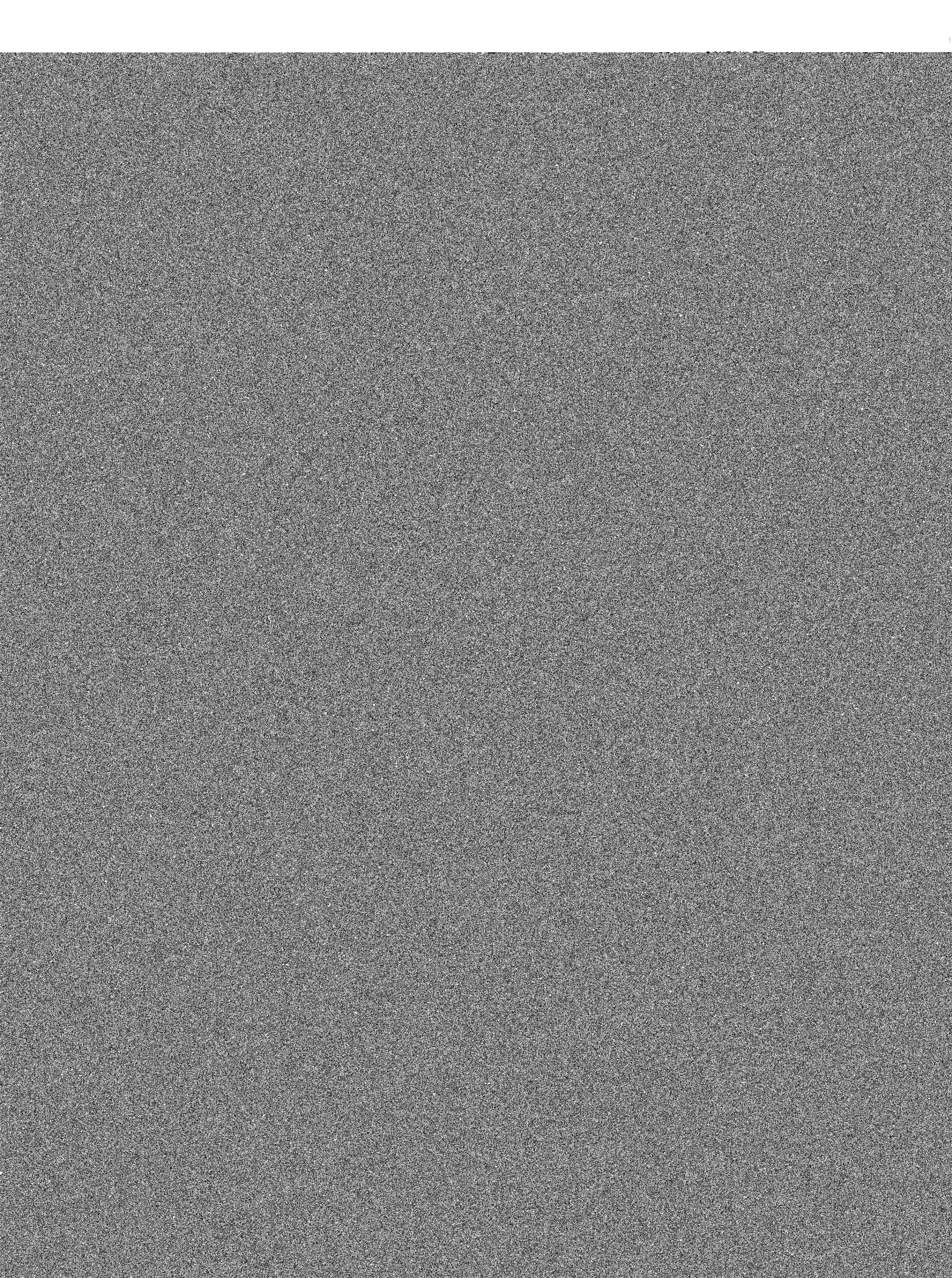
THD 202

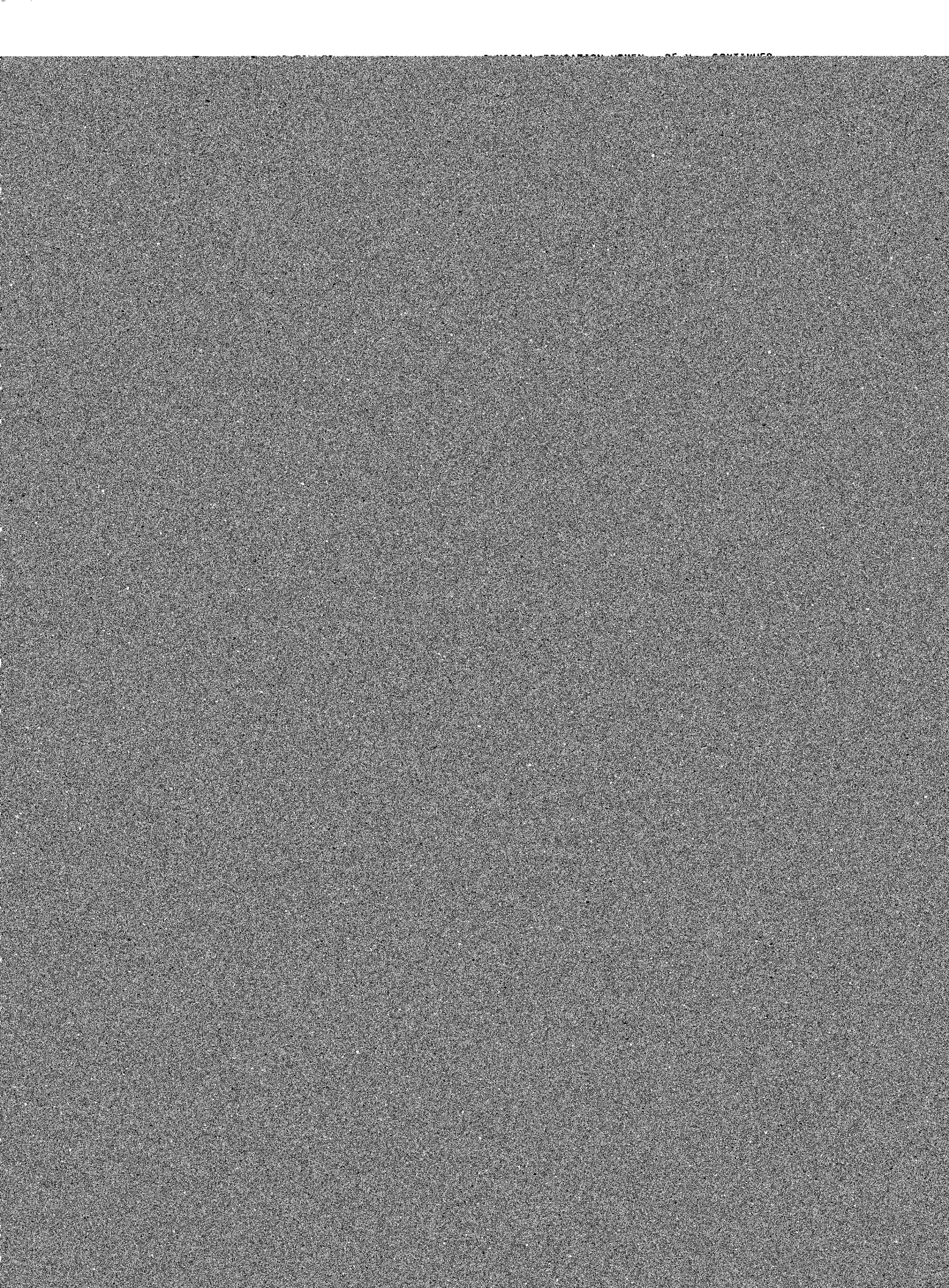
264 0 5

0 130-230

CMU 326







HYDRAULIC ENGINEERING - CEHY - CONTINUED

TRANS, CONSTR, & MATERIALS ENGR-CETC - CONTINUED

543	A	3	M W F	730-830 HUNT	MOR	215	538	A	3	M F T	1130-1230 930-1230 VERESS	MOR	108
544	A	3	T TH	230-330 230-430	HYD HYD	309 320	540	A	3	M W F	1130-1230 930-1230 VERESS	MOR	108

NAVAL SCIENCE - N SCI - CONTINUED

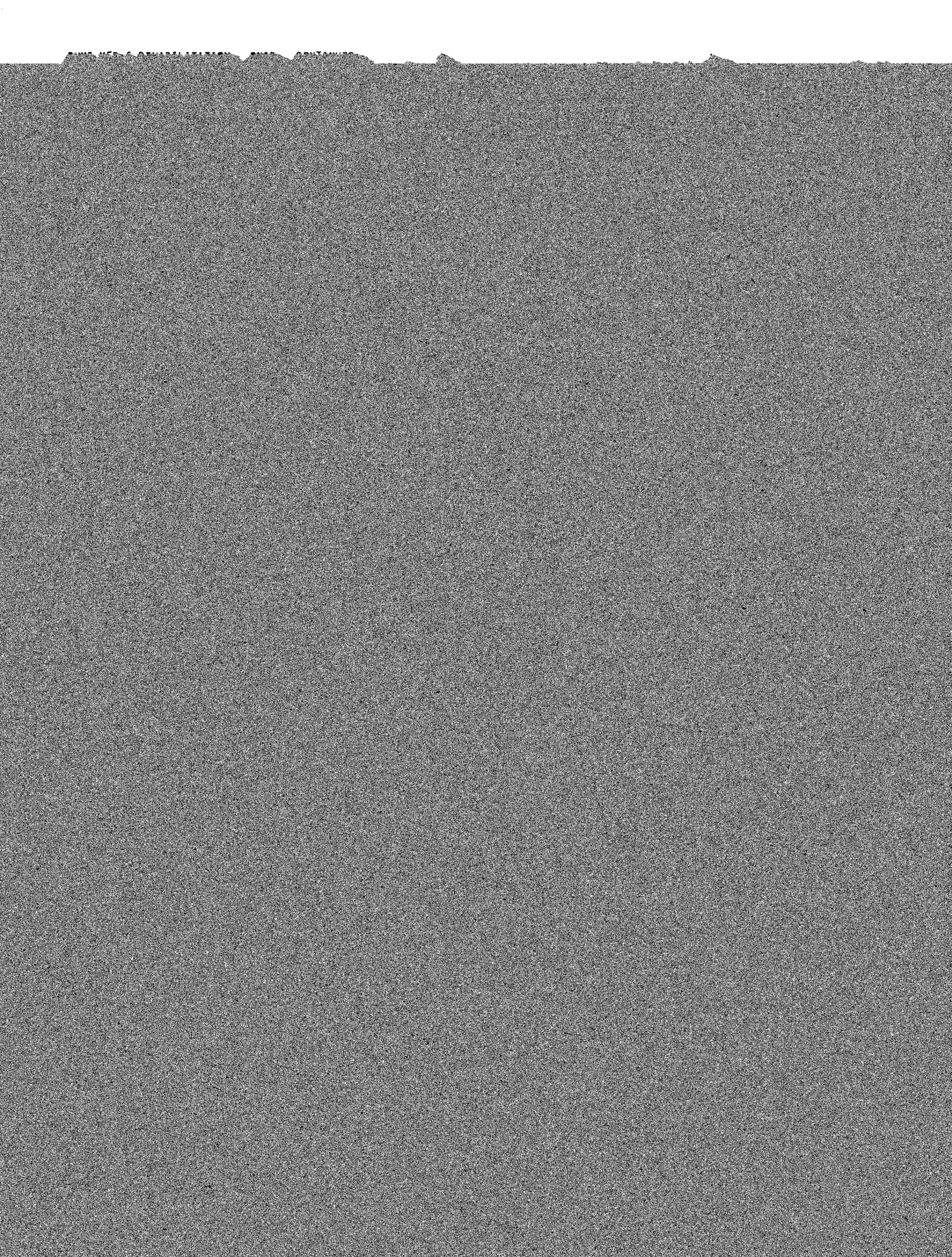
FISHERIES - FISH - CONTINUED

213 ZN 1 TH 1030-1230 CLK 204
T 1130-1230 STD *
GRAY
313 A 3 M W F 1030-1130 CLK 304

531 A 3 * * * *
KATZ
535 A 4 * * * *
BROWN

MEDICINE - MED - CONTINUED

OBSTETRICS & GYNECOLOGY (M.D.)



PSYCHIATRY - PSYC - CONTINUED

RADIOLOGY - RADGY - CONTINUED

	AD	QZ		WITH PSYCH 250 AD		
267	A	2	M	730-930 PATTISCN	HSB	D209
0440	A	*	T	200-400 MED STUDENTS ONLY HOLMES	*	*

0515	A	2	T TH	1030-1130 CHRISTENSEN	*	*
0520	A	2	T	400-600 CHRISTENSEN	*	*
0600	A	*	*	* FISLEY	*	*

