

MARCH 27 AND END SATURDAY, JUNE 3
FINAL EXAMINATIONS BEGIN MONDAY, JUNE 5
QUARTER ENDS FRIDAY, JUNE 9

Detailed descriptions of course content and departmental requirements; often superseding those printed in the General Catalog, are available for reference in the offices listed below:

College of Arts and Sciences
Advisory Office, B10 Padelford; Suzzallo Library, Special Materials Reserve Desk
School of Business Administration
Advisory Office, 137 Mackenzie; Business Administration Branch Library, 100 Balmer
College of Education
Advisory Office, 207 Miller; Office of Graduate Information, 210A Miller

AFTER YOU HAVE USED THIS TIME SCHEDULE,
PLEASE LEAVE IT OR PASS IT ALONG SO OTHER STUDENTS MAY USE IT

Please read instructions on pages V, Vi

WINTER QUARTER 1972 CALENDAR

SPCH 600

GRAD ADV

N 5 700

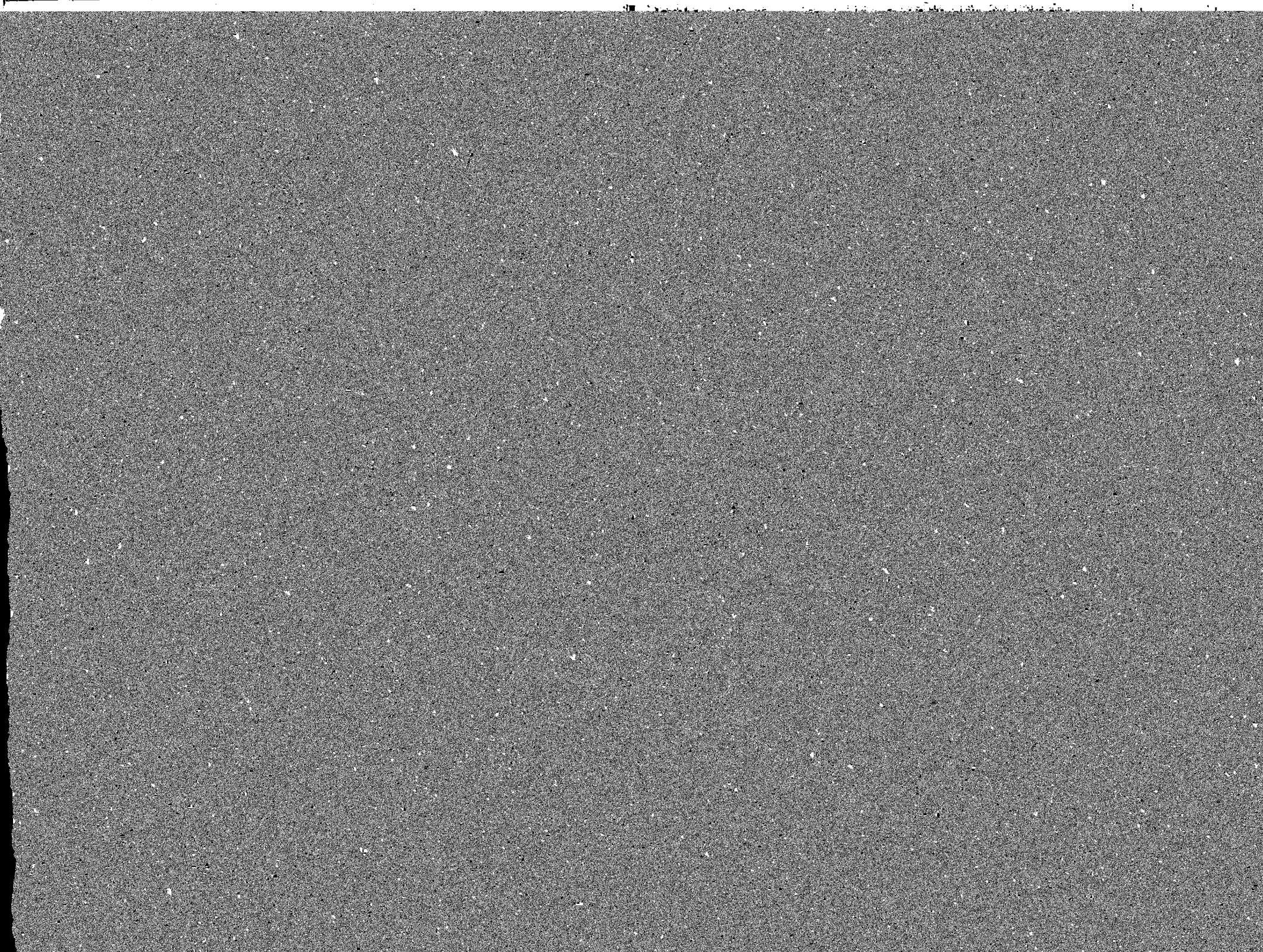
FACULTY ADV

MEMBER ADV

COLLEGE OF ARTS AND SCIENCES

Sched.	DEPT	H	P	N	TIME			
		N	R	E				

Sched.	DEPT	H	P	N	TIME			
		N	R	E				



COLLEGE OF ARTS AND SCIENCES

Sched.	CREDIT	COURSE	HP	PN	RE	TIME	LOCATION	REMARKS	INSTRUCTOR
--------	--------	--------	----	----	----	------	----------	---------	------------

Sched.	CREDIT	COURSE	HP	PN	RE	TIME	LOCATION	REMARKS	INSTRUCTOR
--------	--------	--------	----	----	----	------	----------	---------	------------

SCHOOL OF DENTISTRY

|

