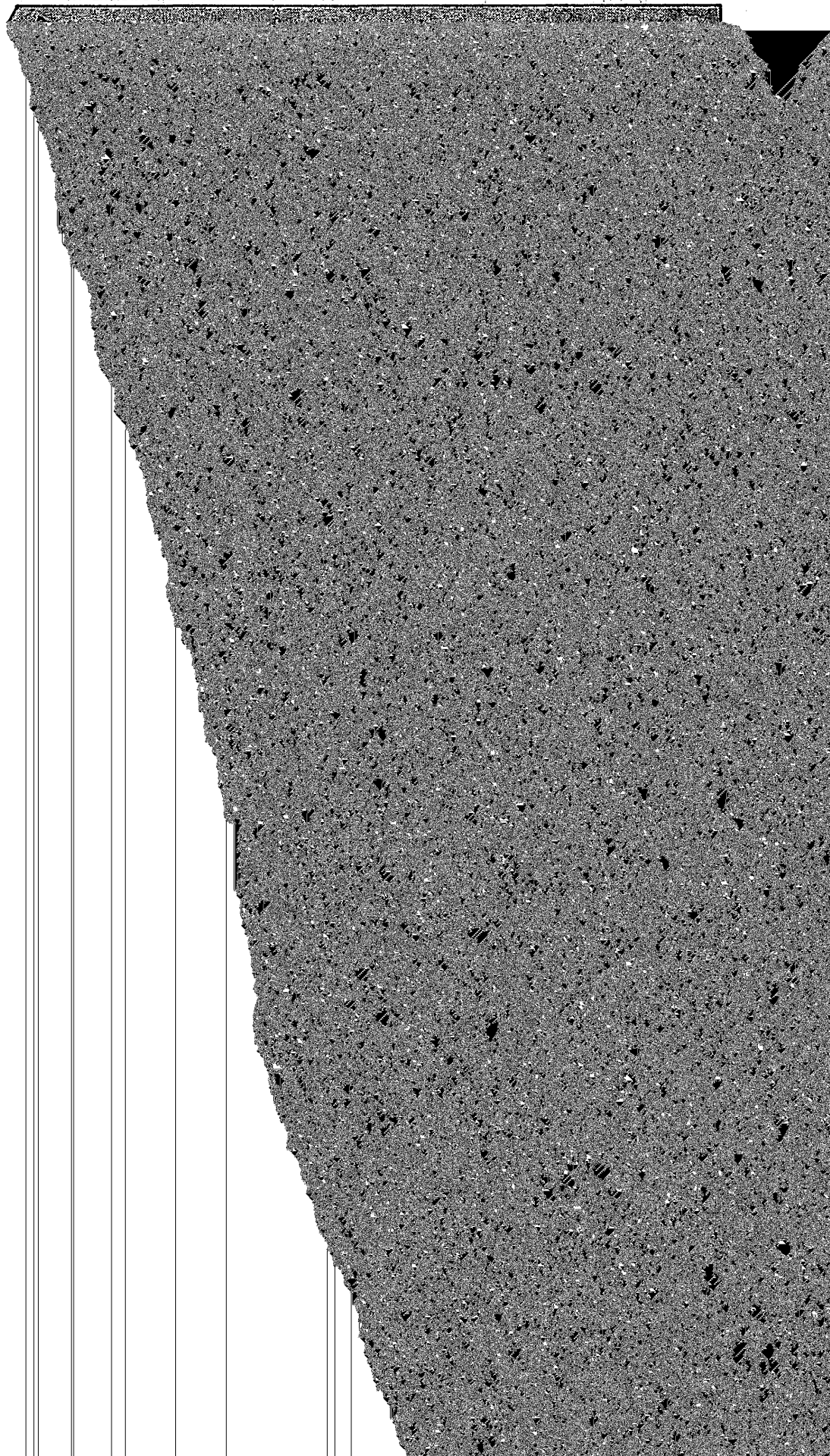




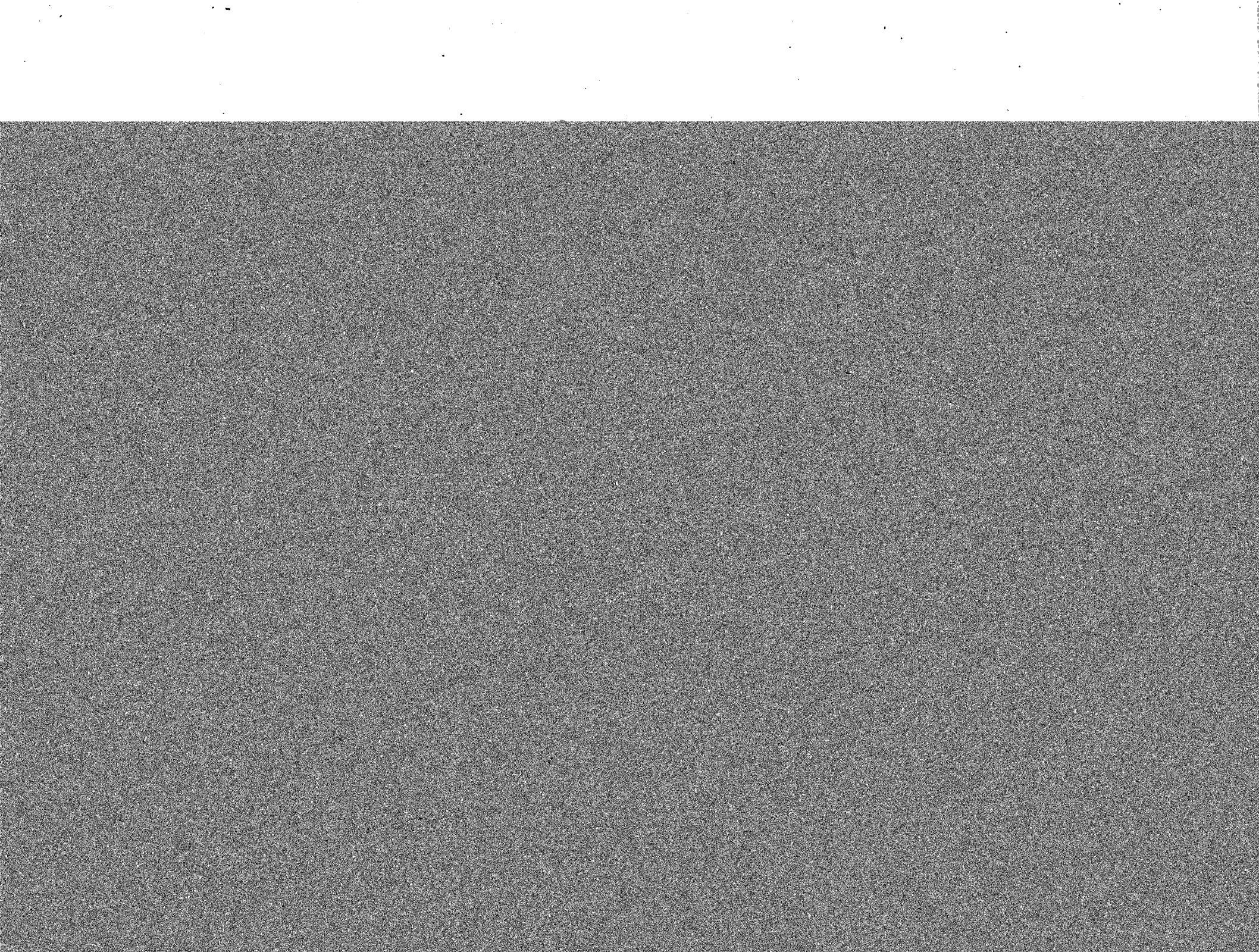


**GUIDE TO SECTIONS BRANCH OFFICE**  
**UNDERGRADUATE LIBRARY GROUND FLOOR**

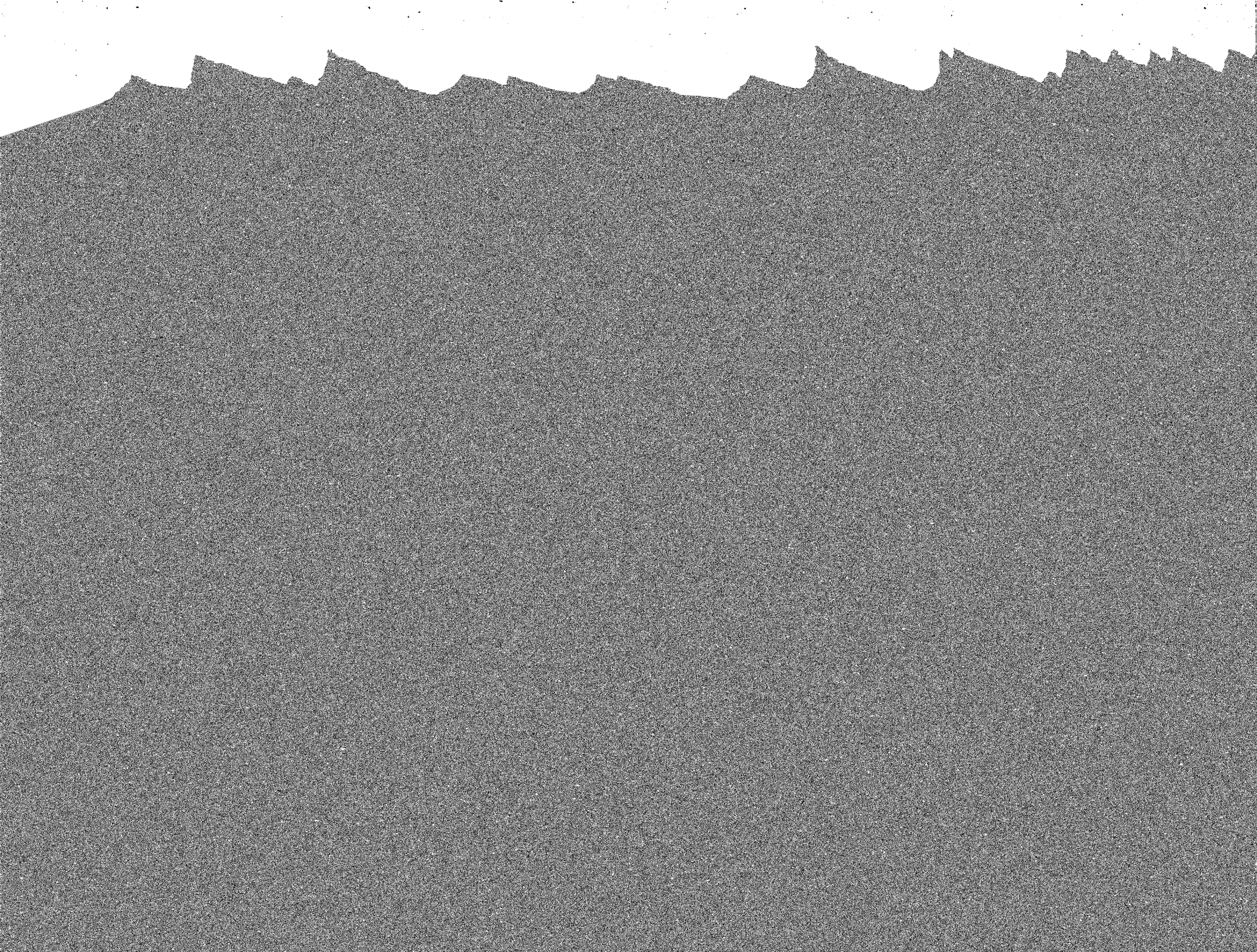




















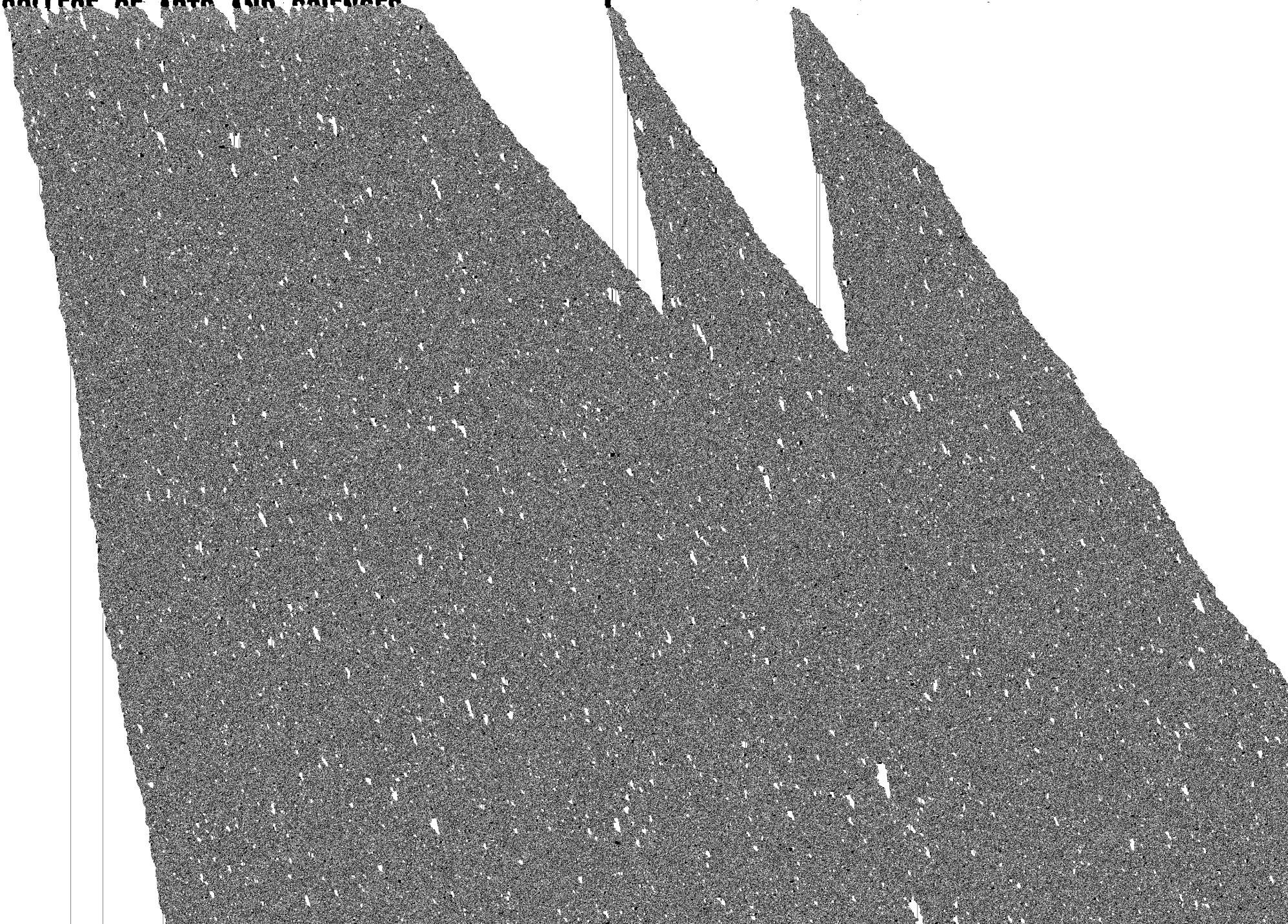






COLLEGE OF ARTS AND SCIENCES

1









**COLLEGE OF ARTS AND SCIENCES**





COLLEGE OF ARTS AND SCIENCES















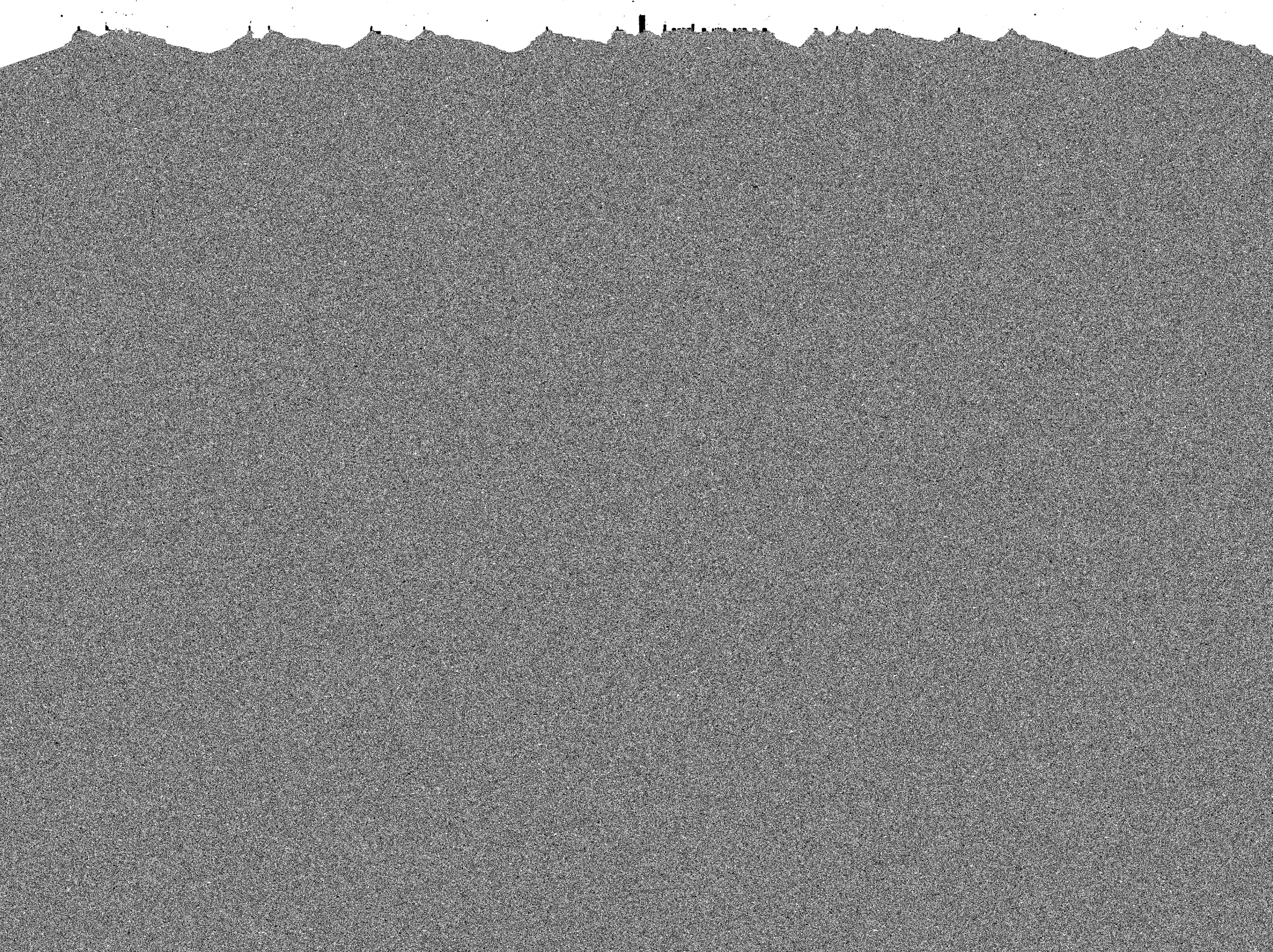


**COLLEGE OF ARTS AND SCIENCES**

**I**



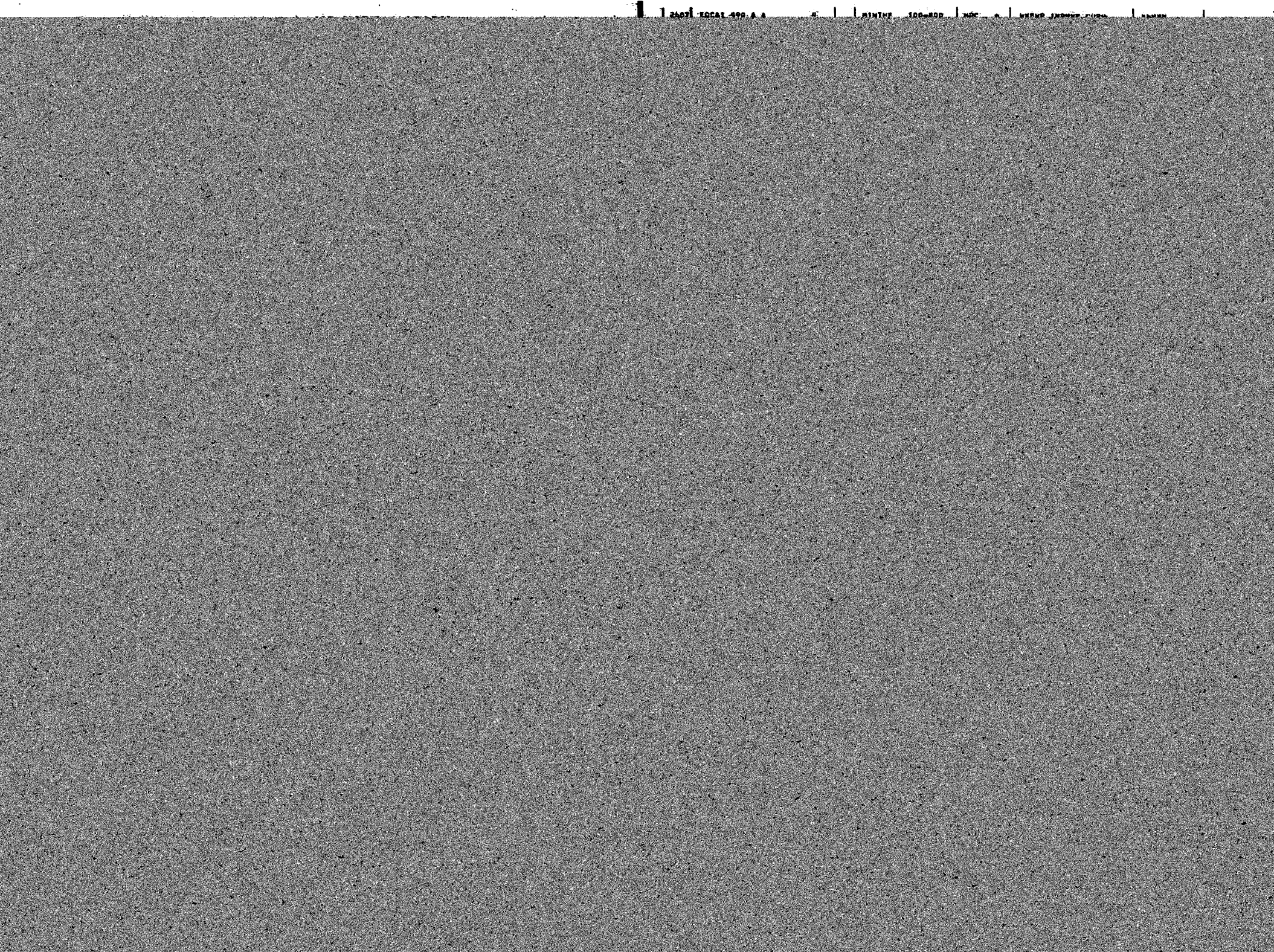
















EDPE 509	A	VAR	ANN	INDEP STUDIES EDUC CR/NC ONLY	EDPE 520	A	9	ANN	MLR 102	SEN APPL SPEC ED EDUC OF THE DEVELP PROF DUMPLY HANDICAPED CONF OF THE SEN	MAKING
----------	---	-----	-----	----------------------------------	----------	---	---	-----	---------	---	--------











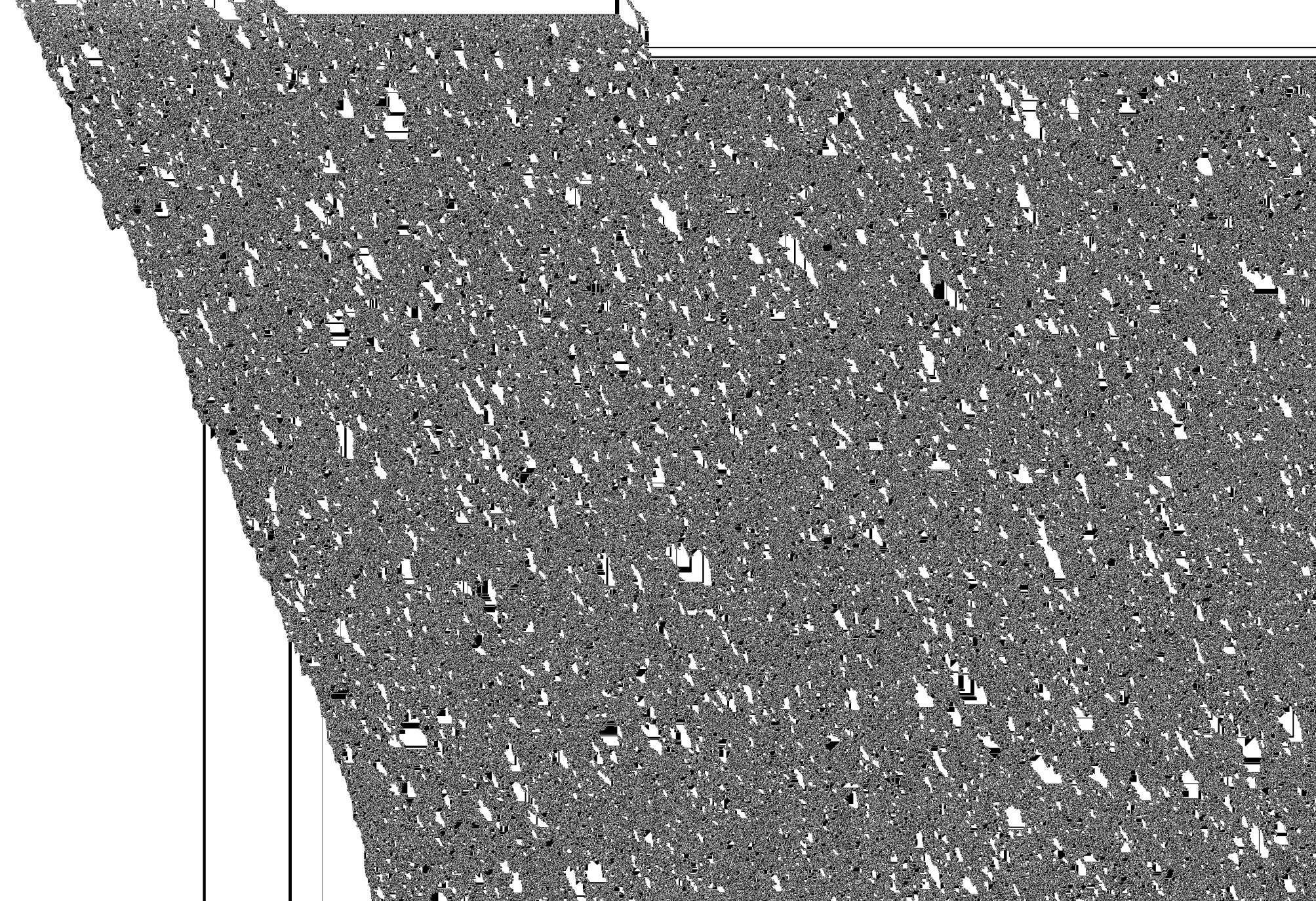








**SCHOOL OF MEDICINE**









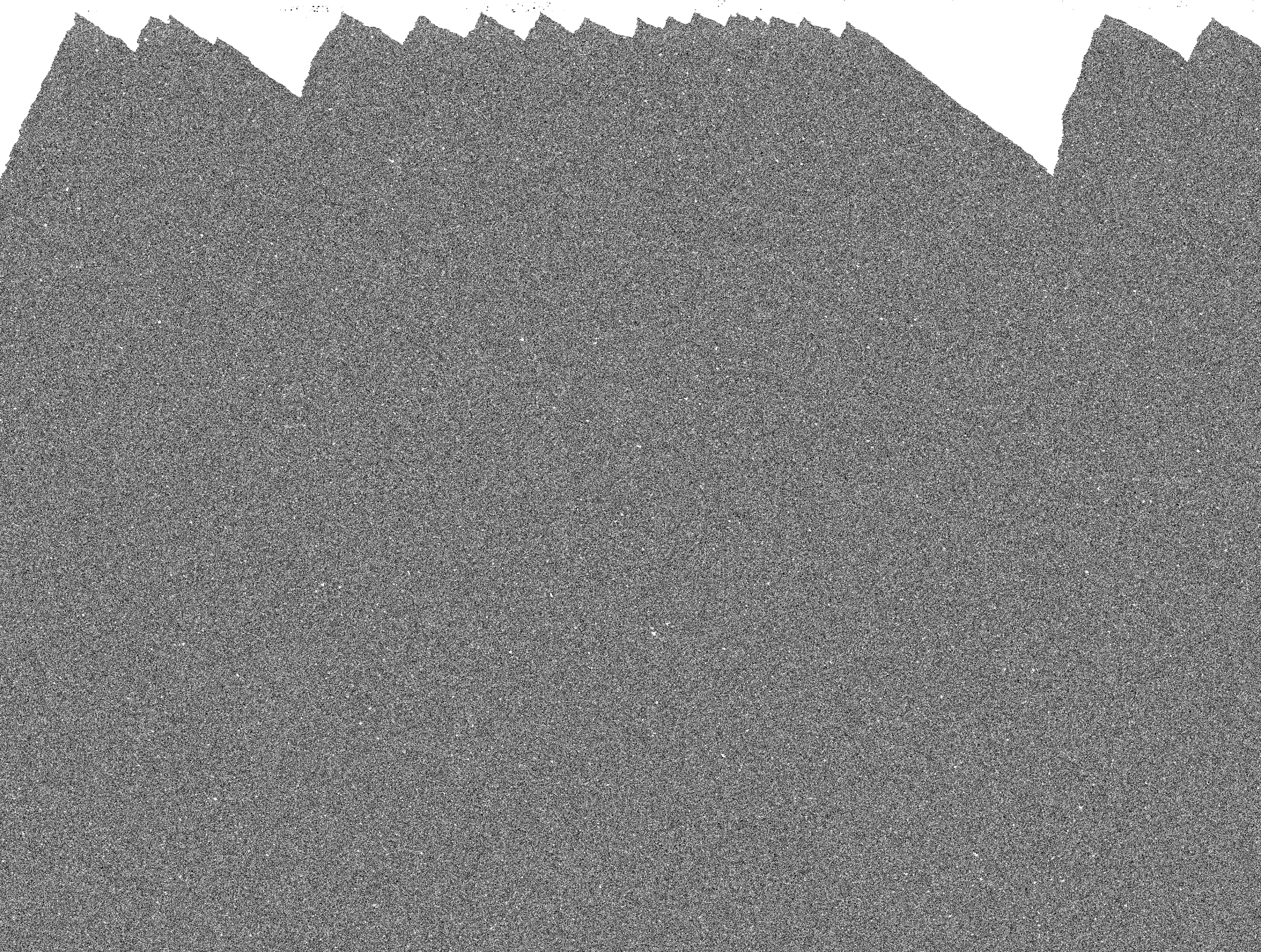














FOREIGN STUDY PROGRAMS









